

THE  
*Meadows*  
CLIFTON PARK

# LEXINGTON II



*Not actual home. May be shown with upgrades.*

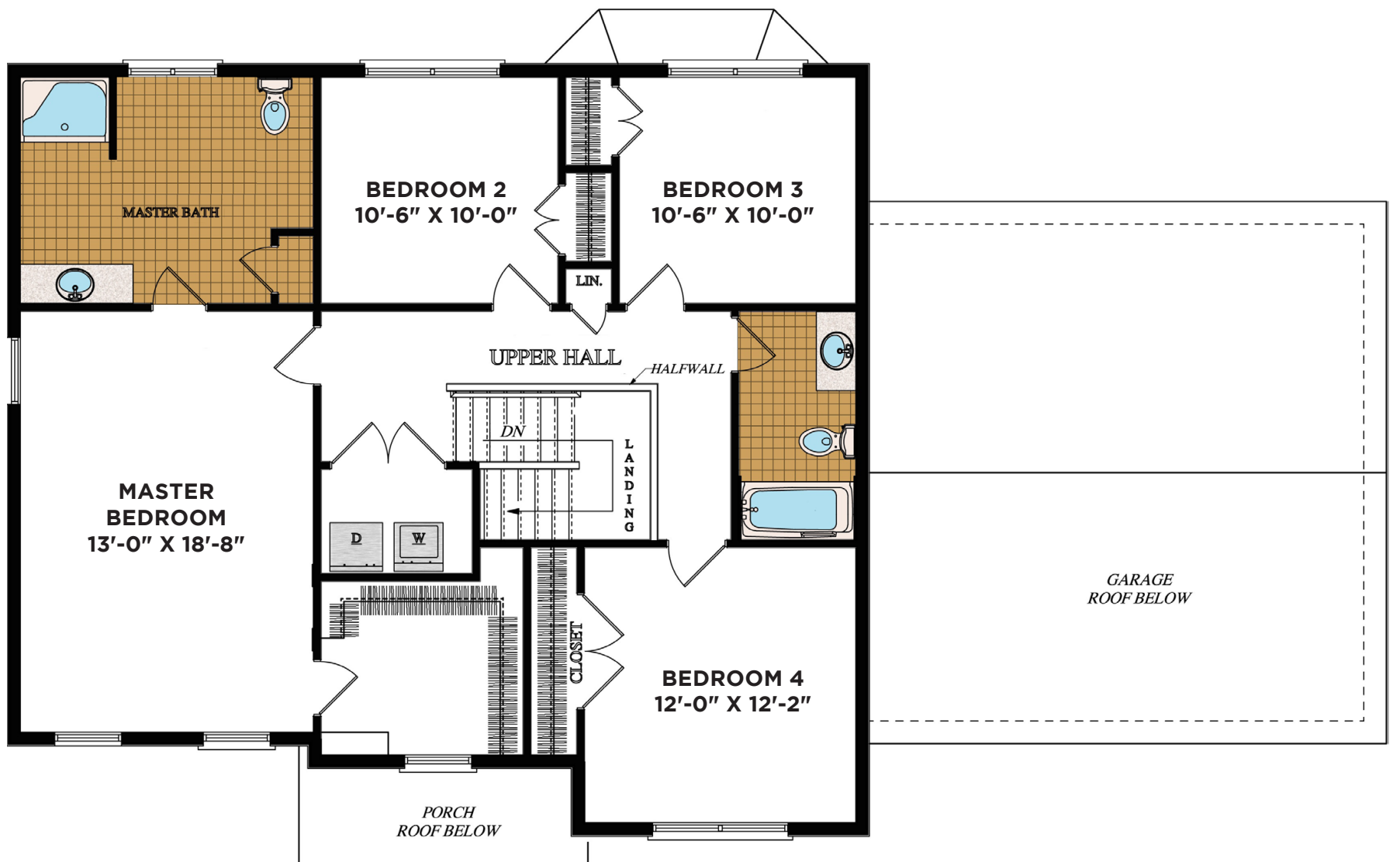
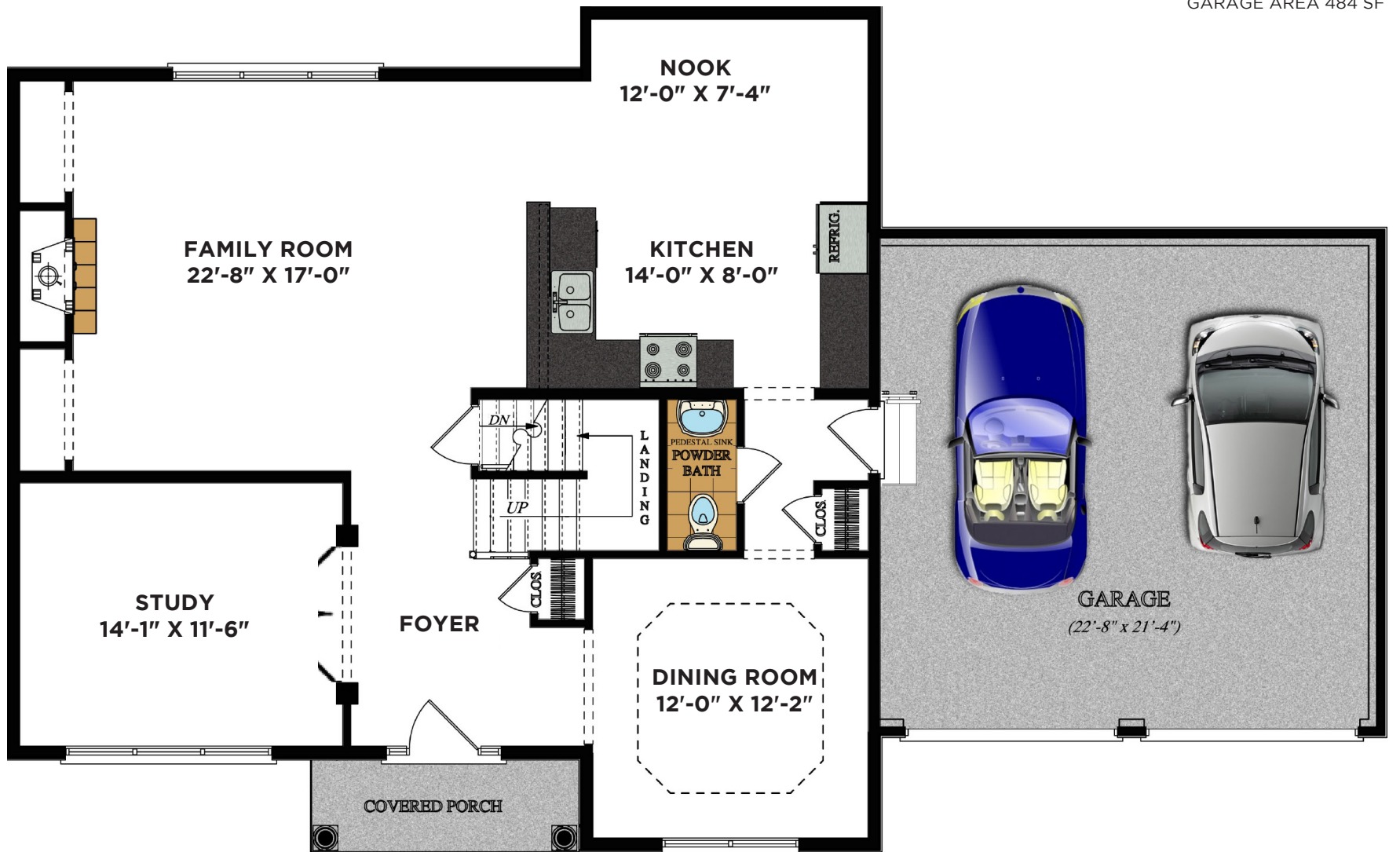
**2440 SF | 4 BR | 2.5 BA**

**Melissa Barnes**

Lic. Real Estate Salesperson **(518) 914-9093**

E. [Melissa@bellahomebuildersinc.com](mailto:Melissa@bellahomebuildersinc.com)

FIRST FLOOR 1218 SF  
SECOND FLOOR 1222 SF  
GARAGE AREA 484 SF



Room dimensions are approximate and subject to change. Information deemed reliable but not guaranteed.